



JABATAN PELAJARAN NEGERI TERENGGANU

**PEPERIKSAAN PERCUBAAN
SIJIL PELAJARAN MALAYSIA 2012**

3765/1

INFORMATION AND COMMUNICATION TECHNOLOGY

SKEMA JAWAPAN

Pengiraan Markah :

Kertas 1	: 70%
Kerja Kursus	: 30% (+)
<hr/>	
Jumlah	: 100%
<hr/>	

Section A

Answer Sheet

Question No. <i>No. Soalan</i>		Candidate's Answer <i>Jawapan Calon</i>	Marks <i>Markah</i>
1	(i)	B	1
	(ii)	A	2
2	(i)	computer attack/ <i>serangan komputer.</i>	3
	(ii)	computer theft/ <i>kecurian komputer.</i>	4
3	(i)	hacking	5
	(ii)	Malicious code	6
4		True	7
5		A	8
6	(i)	C	9
	(ii)	A	10
7		FALSE	11
8		FALSE	12
9		TRUE	13
10		TRUE	14
11		TRUE	15
12		FALSE	16
13	(i)	WEB BROWSER	17
	(ii)	EMAIL CLIENT	18
14		Medicine/ Perubatan	19
15		B	20
16		Adobe Audition	21
17	(i)	Instructional designer	22
	(ii)	Project Manager	23
18		C	24
19	(i)	Program	25
	(ii)	programming language/ <i>bahasa pengaturcaraan</i>	26
20	(i)	Structured approach	27
	(ii)	object-oriented approach	28
21	(i)	selection	29
	(ii)	sequence	30
22	(i)	people	31
	(ii)	hardware	32
23		Record	33
24	(i)	Book ID	34
	(ii)	Supplier ID	35
25		Delete	36

Section B

26. P : Integer – any whole number value that does not have any fractional part.
Q; String – any of value that contains a sequence characters

27. (a) client/ server network – 1 m
Justifikasi:
- have client and server
- Pcs are connected to server
* any one – 1 m

- (b) i. Easily managed security policy
ii. files are centrally located
iii. files are easy to backup
* any two – 2 m

28. (a) Data backup

(b)

Situasi 1 I)	i) Select the file to backup – 1m ii) Choose the storage location – 1m iii) copy & paste – 1m
Situasi 2 S e	i) Select the file to backup and click ‘copy’ (1m) ii) Choose the storage location (1m) and click ‘paste’ (1m)
Situasi 3	right click file (1m) > send to (1m) > new location (1m)
Situasi 4	Select the file to backup (1m)> drag the file to new location (1m) > drop file (1m)

- 29.
- a) **File manager/management** [1]
Performing routine data management tasks, such as deleting, renaming, cataloging, uncataloging, moving, copying, merging, generating and modifying data sets, sort by, arrange icons by [any relevant explanation – 1]
- b) **Disk/ File compression** [1]
Utilities can transparently compress/ uncompress (zip & unzipped) the contents of a disk, increasing the capacity of the disk [1]
30. a. i) Non-linear
ii) Linear
- b. i. Allow user to interact with the content according to what the user want.
ii. User can control the progress using button or links.
iii. Provide two-way communication.
iv. user friendly

Section C

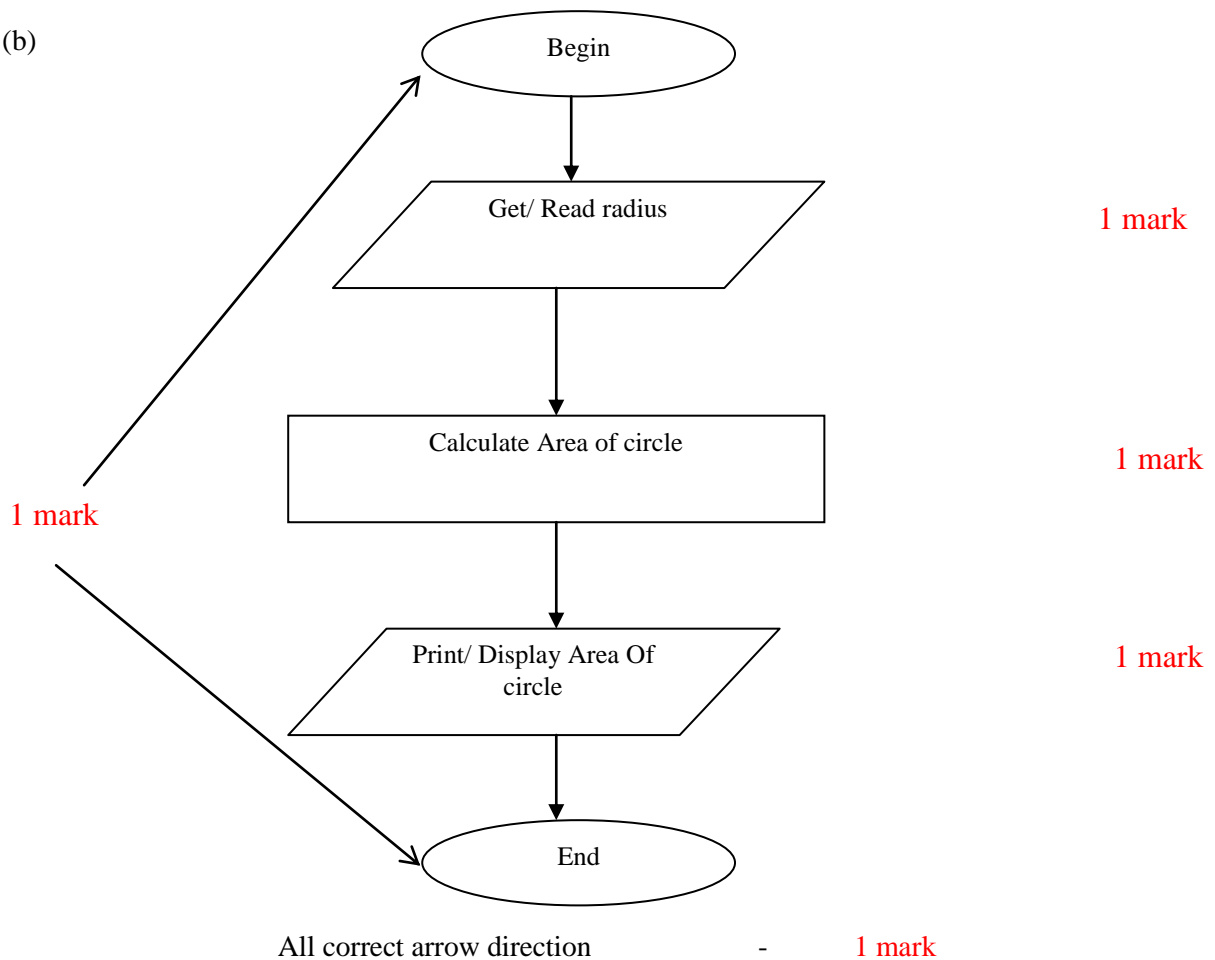
31.

- (a) X : Modem, wireless modem, modem router - 1m
Function : Modem : used to connect a computer or router to internet - 1m
- (b) (i) PC2 -1m & PC3 – 1m
PC2 Wrong IP address 192.168.1.3 - 1m
PC3 Wrong Subnetmask 255.255.250.0 – 1m
- (ii) Change IP address for PC2 from 192.168.1.3 to 192.168.0.3 - 1m
or
Change Subnetmask for PC3 from 255.255.250.0 to 255.255.255.0 – 1m
(max. 5 marks)

32.

- (a) Input – radius 1 mark
Output – Area/ Area of Circle 1 mark

(b)



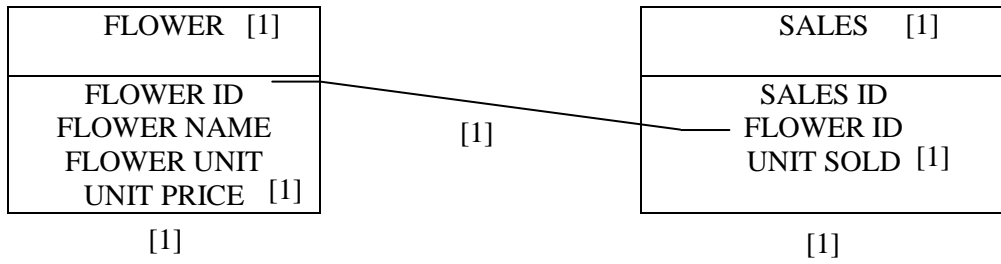
**Note:**

table flower mesti ada medan unit price untuk dapat 1 m
table sales mesti ada medan unit jualan untuk dapat 1 m