

**PEPERIKSAAN PERCUBAAN SPM 2011  
INFORMATION AND COMMUNICATION TECHNOLOGY 3765/1**

**ANSWER SHEET  
Helaian Jawapan**

NAME			
IC NO			
QUESTION NO		CANDIDATE'S ANSWER	MARKS
1	i	C	1
	ii	B	2
2		TRUE	3
3			4
4	i	CPU SOCKET/ZIF SOCKET	5
	ii	EXPANSION SLOT/PCI SLOT	6
5		A	7
6		STORE DATA TEMPORARILY WHILE PROCESSING	8
7	i	AUDIO	9
	ii	TEXT	10
8	i	R	11
	ii	S	12
9		TO CONNECT MULTIPLE LANs/COMPUTERS	13
10		NETWORK OPERATING SYSTEM	14
11		WAN	15
12		STAR TOPOLOGY	16
13		ANALYSIS PHASE	17
14		INTERNET TECHNOLOGY	18
15	i	*.mp3, *.aif/*.aiff, *.wav, *.midi, *.au, *.wma,	19
	ii	*.avi, *.mov, *.mpeg, *.wmv, *.3gp	20
16	i	LINEAR INTERACTIVITY	21
	ii	NON-LINEAR INTERACTIVITY	22
17	i	R	23
	ii	S	24
18	i	TRUE	25
	ii	FALSE	26
19	i	P	27
	ii	Q	28
20		CODING PHASE	29
21		TESTING AND DEBUGGING	30
22		Y	31
23		DSS – DECISION SUPPORT SYSTEM	32
24	i	Z	33
	ii	X	34
25	i	FALSE	35
	ii	TRUE	36
TOTAL MARKS			

ANSWERS

SECTION B

26.

a. Unethical activity

- Modifying certain information on the internet affecting the accuracy of the information.
- Involvement in stealing software
- Invasion of privacy
- Selling information to other parties without the owner's permission
- Using information without authorization
- Reading your friend's e-mail without permission.

(Choose any ONE) [1 mark]

Law breaking activity

- Selling pirated CD
- Hacking into your school database to change your examination results

(Choose any ONE) [ mark]

b. Cyber law is needed to protect:

- The integrity and security of information
- The legal status of online transactions
- The privacy and confidentiality of information
- The intellectual property rights
- Government data
- To protect the internet and other online communication technologies.

(Choose any TWO) [2 marks]

27. Figure 1 shows the information processing cycle.

*Rajah 1 menunjukkan kitaran pemrosesan maklumat.*

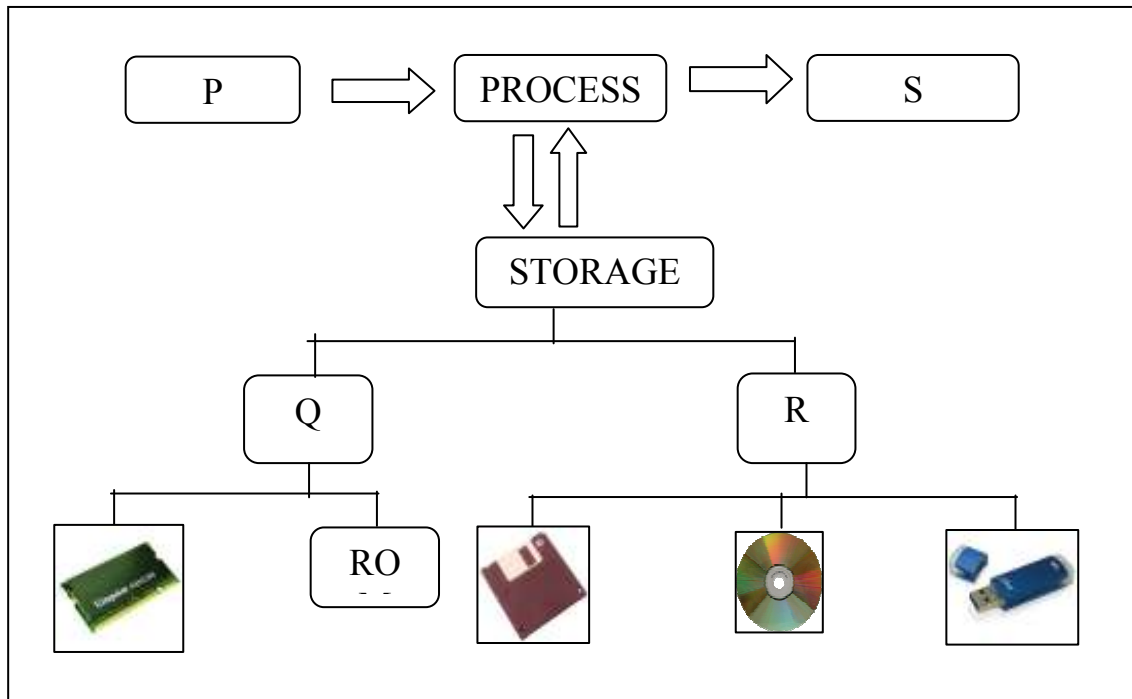


FIGURE 1

*RAJAH 1*

Based on Figure 1 :

*Berdasarkan Rajah 1 :*

(a) *State and give the meaning of P.* [ 2 marks]

*P : Input* [1 mark]

*Meaning of P is any data and instructions entered into the computer.* [1 mark]

(b) *State the function of R.* [ 2 marks]

*The function of R ( secondary storage) :*

- It is non – volatile, which means that it does not need power to maintain the information stored in it.*
- It will store the information until it is erase.*

28. a. Client/Server Network

A client/server network is a network in which the shared files and applications are stored in the server but network users (clients) can still store files on their individual PCs. A server is a computer that shares information and resources with other computers on a network. A client is a computer which requests services or files from a server computer.

Peer-to-peer network

Peer-to-peer or P2P network is a network with all the nodes acting as both servers and clients. A PC can access files located on another PC and can also provide files to other PCs. All computers in the peer-to-peer network have equal responsibilities and capabilities to use the resources available on the network. With peer-to-peer network, no server is needed; each computer in the network is called a peer.

b. Situation = School Lab, have 1 server and the other pc is a client. [2 marks]

29. a. (i) instructional designer [1 mark]

(ii) to decide on the best educational strategies and practices to present the information. [1 mark]

b. (i) cd-based / web-based [1 mark]

(ii) Justification : [1 mark]

Web-based	CD-based
<del>• limited in picture size and low resolution video</del>	• can store high end multimedia elements such as video
<del>• can be changed, damaged or deleted by irresponsible individuals</del>	• can be permanently stored and are not changeable
• information for multimedia can be updated easily and is cheaper	<del>• information on a multimedia can be quickly outdated</del>

30. a. i) Field

ii) A unit of data contain of one or more characters (byte)

b. i) People

ii) anyone/individual who communicate/use the computer (including hardware, software and output)

## SECTION C

### Question 31

- a) (i) - package price / normal price / *Harga pakej / Harga biasa*  
- Final price / new price / discounted price / *Harga muktamad / harga baru / harga*  
*selepas diskaun*

(ii) justify/ Justifikasi :

The value of the package may change at any time (during the course of a program).

*Nilai item tersebut boleh berubah-ubah pada bila-bila masa. (semasa program dilaksanakan).*

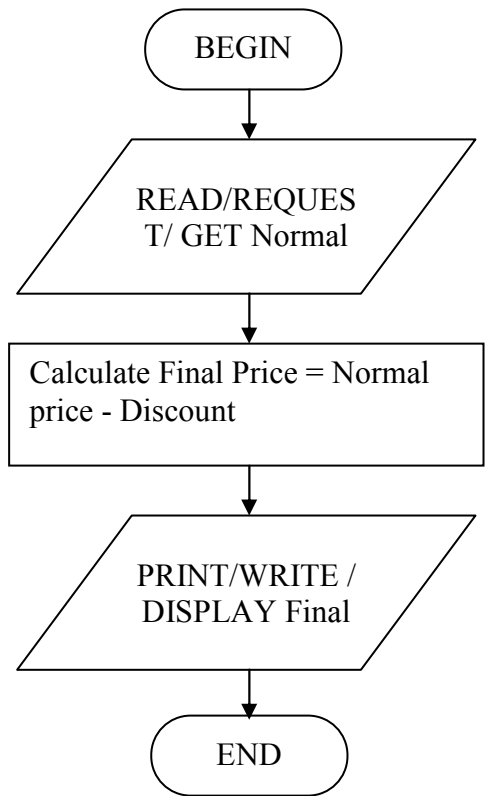
b) PSUEDO CODE

```
Begin
  Read / Request / Get   Normal Price
  Calculate Final Price = Normal Price – Discount Price
  Display Final Price
End
```

**Marks allocation :**  
BEGIN / END – 1 mark  
Input – 1 mark  
Process – 1 mark  
Output – 1 mark

OR

**Marks allocation :**  
Correct symbols – 1 mark  
Correct arrows – 1 mark  
Input / output – 1 mark  
Process – 1 mark

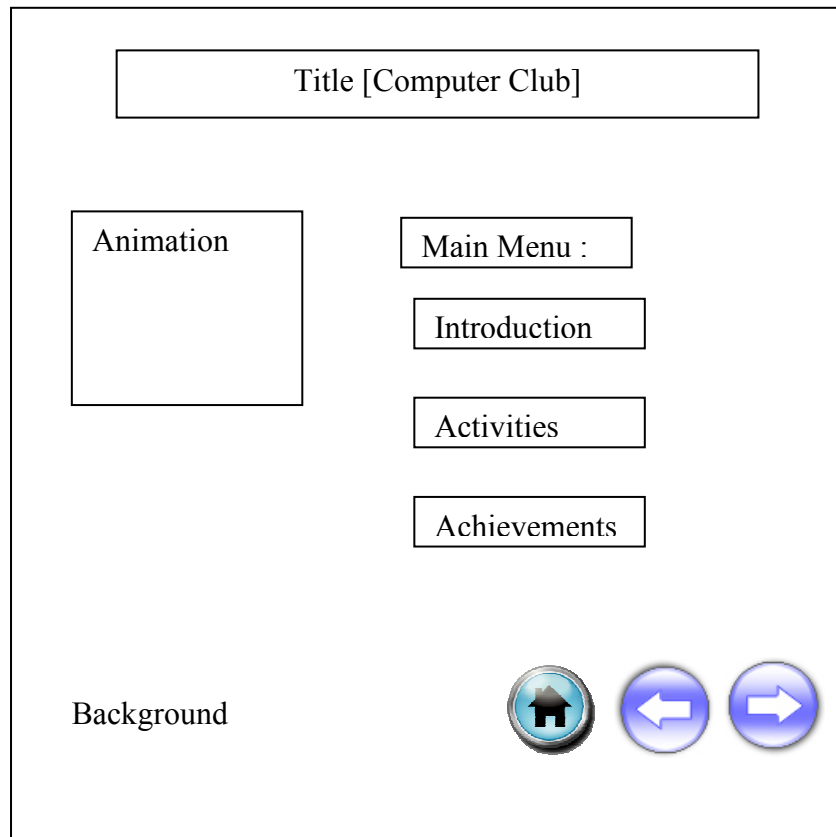


**Question 32**

a) 3 marks

Project Title	Computer Club
Objective(s)	To promote Computer Club and to recruit new members.
Targeted Audience	Students

b)



**Marks allocation :**

Title – 1 mark

Navigation – 1 mark

Multimedia elements (at least 3 elements) – 1 mark

Creativity – 1 mark

a)

Customer Query						
CustomerID	Name	ContactNumber	Price	Title	Author	Publisher
C006	Faridah Abd Fatah	0193564784	RM78.00	Discovering Computers 2011	Shelly Vermaat	Course Technology
C006	Faridah Abd Fatah	0193564784	RM68.00	Information Technology in Theory	Pelin Aksoy	Thomson Course Technology
C006	Faridah Abd Fatah	0193564784	RM56.00	Computers : Tools for Information Age	H.L Capron	Pearson Technology

b)

Field:	Name	BookID	Title	Price(RM)	Payment	
Table:	Customer	Book	Book	Book	Order	
Sort:						
Show:	<input checked="" type="checkbox"/>	<input checked="" type="checkbox"/>	<input checked="" type="checkbox"/>	<input checked="" type="checkbox"/>	<input checked="" type="checkbox"/>	
Criteria:				<50	"Cash"	
or:						

**Marks allocation :**

Correct fields – 1 mark

Correct tables – 1 mark

Criteria <50 – 1 mark

Criteria "Cash" – 1 mark