



**JABATAN PELAJARAN NEGERI SEMBILAN**

**PEPERIKSAAN PERCUBAAN SETARA  
SIJIL PELAJARAN MALAYSIA 2010  
INFORMATION AND COMMUNICATION TECHNOLOGY**

**3765/1**

**Kertas 1  
September  
2½ jam**

**Dua jam tiga puluh minit**

---

**SCHEME**

NO KAD PENGENALAN																				
ANGKA GILIRAN																				
<b>Answer Sheet Helaian Jawapan</b>																				
Question No. No. Soalan		Candidate's Answer Jawapan Calon															Marks Markah			
1.	(i)	Biometric devices																1		
	(ii)	Voice Recognition/Fingerprint Recognition/Facial Recognition and others																2		
2.		Firewall																3		
3.		D																4		
4.	(i)	C																5		
	(ii)	A																6		
5.		16 bits																7		
6.		Spreadsheet																8		
7.		A																9		
8.		Inserting RAM into RAM slot																10		
9.	(i)	Coaxial Cable																11		
	(ii)	Physical transmission medium																12		
10.		web browser																13		
11.	(i)	Q																14		
	(ii)	P																15		
12.	(i)	video																16		
	(ii)	. mpeg / . avi / . mov / . wmv																17		
13.		D																18		
14.	(i)	Icon concept																19		
	(ii)	Card concept																20		
15.		B																21		
16.	(i)	computer program																22		
	(ii)	words, codes																23		
17.	(i)	True																24		
	(ii)	False																25		
18.		C																26		
19.	(i)	Assembler																27		
	(ii)	Interpreter																28		
	(iii)	Compiler																29		
20.		Input/Output																30		
21.		B																31		
22.		field																32		
23.		True																33		
24.	(i)	Data/People																34		
	(ii)	People/Data																35		
25.		primary key																36		

**Section B**

[20 marks]

## Schema

26

- (a) (i) The file has being infected/ attacked by virus. *1 mark*
- (ii) Scanning the thumb drive using antivirus software. *1 mark*
- (b) (i) The computer in ICT room must be install antivirus software to prevent data or files for being infected/attacked by viruses. *1 mark*
- (ii) Kaspersky /Avira / Norton Anti Virus/any relevant anti virus *1 mark*

27

- (a) X : Internet  
Y : Intranet *1 mark for each answer  
Total : 2 M*
- (b) One differences between X and Y.

Internet	Differences	Intranet
Public	Used for	Private
Provide Information for public	Types of users	Provide Information for organization employees
Access all kinds Of information	Usages	Telephone directories, Internal job openings, Employee information
Loose	Security	High

*Each pair:  
2 marks*

And any relevant answers provided by students.

28 (a) (i) Repetition

1 mark

(ii) These user interface principle :

- i. Applies the same interface design for all screens.
- ii. Uses similar font faces and colour schemes throughout a particular interface, unless the change is used to signal a new topic.
- iii. Icons used for navigation should maintain one position to avoid confusing the user.
- iv. Uses the same words or commands perform the same functions.

*Choose one explanation :  
2 marks*

(b) Design Phase

1 mark

29. (a)

- (i) X : Compiler
- (ii) Y : Interpreter

1 mark

1 mark

(b) One differences between translator X and translator Y.

Compiler	Aspect	Interpreter
Translate entire programming statement and execute it later	Method	Translate programming statement line by line and execute it immediately
Store machine language as object code on the disk	Object code	No object code is saved
Compiled code run faster	Running time	Interpreted code run slower

*Each pair:  
2 marks*

And any relevant answers provided by students.

30. (a) P is Testing phase.

Two activities that carried out in these phase are :

- i. The user run tests on the system and give feedback to the system developer.
- ii. The system developer will eliminates/fixes the errors based on feedback given by the user and make sure the system matched the user needs.
- iii. Any relevant answers provided by students.

*Each answer  
:1 mark  
Total : 2  
marks*

(b) Q is Documentation phase.

Suggestion answers:

- i. Documentation is very important phase because it was a written detail description about programming cycle and specific facts about the system/program.
- ii. If there are a problem arise the system developer can referred these documentation to solve the problems.
- iii. Documentation not only helps the system developer to fix the problems but also act as a user manual. User manual will guide the new system users to enter the data and use the system correctly.
- iv. Any relevant answers provided by students.

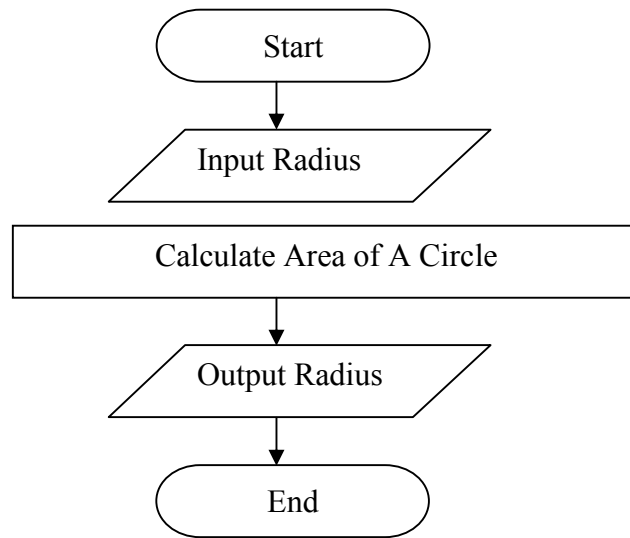
*Choose one  
answer : 2  
marks*

**Section C**  
[14 marks]

Scheme / Skema

31.

(a)



*Start, End  
and arrow  
(1 mark)*

*Input =  
1 mark*

*Process =  
1 mark*

*Output =  
1 mark*

*All label  
must be  
correct*

(b) i) Constant =  $\text{Pi} = \pi = 3.14$

*1 mark*

Variable = r (radius/jejari)

ii) Area of A Circle =  $\text{Pi} * r * r$  @

$$= 3.14 * r * r @$$

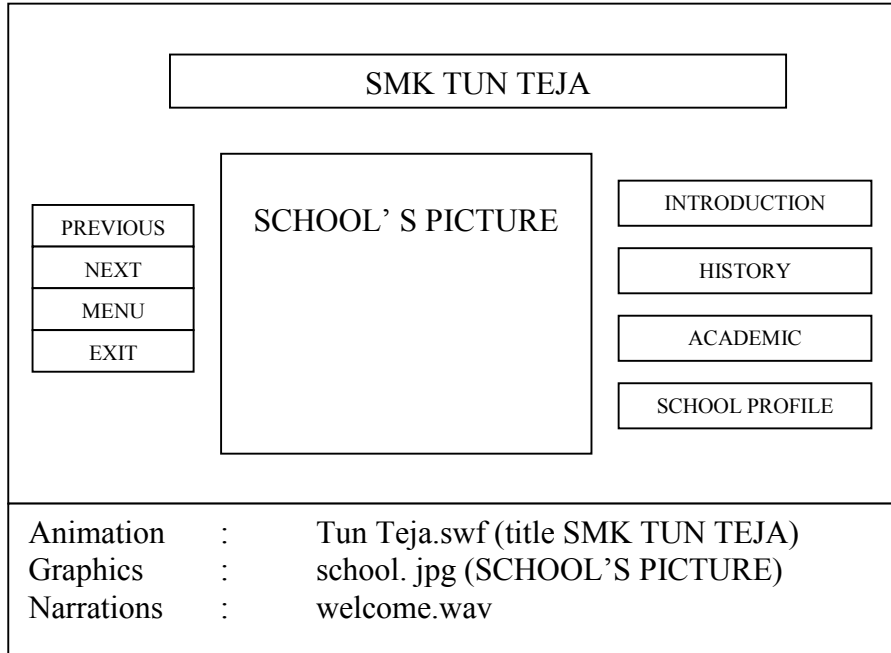
$$= \pi * r * r$$

*Choose one  
formula :*

*2 marks*

- 32 (a) Draw a storyboard of any one slide which fulfills the above requirements.

Suggestion answer



*Storyboard content must adequate with school's information such as history, academic, school profile and etc.*

*( 3 marks)*

*Show 3 - 5 elements of multimedia*

*( 4 marks)*

*Total : 7 marks*

*Any relevant storyboard drawn by students.*

33 (a) Primary key : Registration number

*1 mark*

Registration number assign as primary key because :

*Each answer :*

i. It is unique identifies each car's record in database.

*1 mark*

ii. It ensures no duplicate registration number exist in database.

*Total : 2 marks*

(b) Data entry form design

Suggestion answer

GARAGE SALES FORM	
BRAND	<input type="text"/>
MODEL	<input type="text"/>
COLOUR	<input type="text"/>
REGISTRATION NUMBER	<input type="text"/>
PRICE	<input type="text"/>

*Design must show*

*Title : 1 mark*

*5 labels with*

*descriptive*

*name :*

*2 marks*

*Text box for*

*data entering :*

*1 mark*

*Any relevant design drawn by students.*

**END OF QUESTION PAPER**  
**KERTAS SOALAN TAMAT**