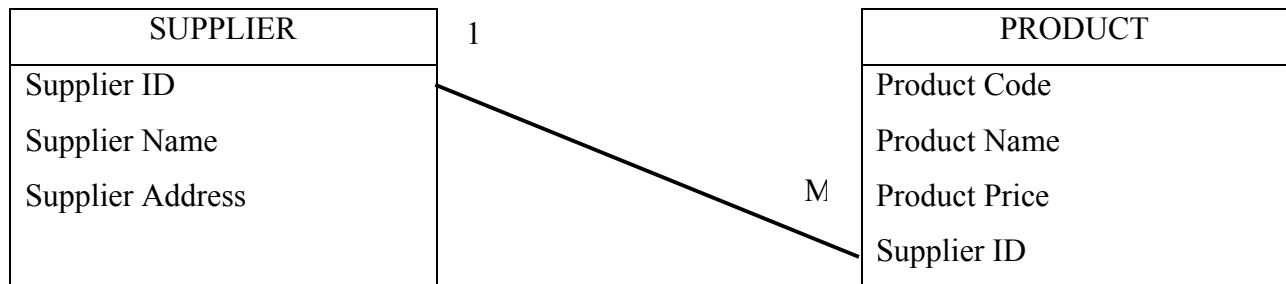


Question 31 (i)

[4marks]

*1 mark for table Supplier with correct fields.

*1 mark for table Product with correct fields.

*1 mark for relationship line between primary key and foreign key.

*1 mark for type of relationship. (e.g.: 1:M, 1:∞)

Question 31 (ii)

- Primary key can contain only unique value but foreign key may contain duplicate value.
- Primary key cannot accept null value but foreign key can be null value.
- Any relevant answer.

[2 marks] – 1 correct point for both primary key and foreign key.

[1 mark] – 1 correct point for primary key or foreign key.

[1 mark] – correct points for both primary key and foreign key but not from the same aspect or not parallel.

Question 31 (iii)

Query / Kuir

[1mark]

Question 32 (i)

- to define the scope of the project
- to discuss with the client
- to search for financial resources, equipment and facilities
- to coordinate the production team

Example:

The Project Manager's role is to discuss with the client to find the specific needs for the multimedia such as the target audience.

[3 marks]

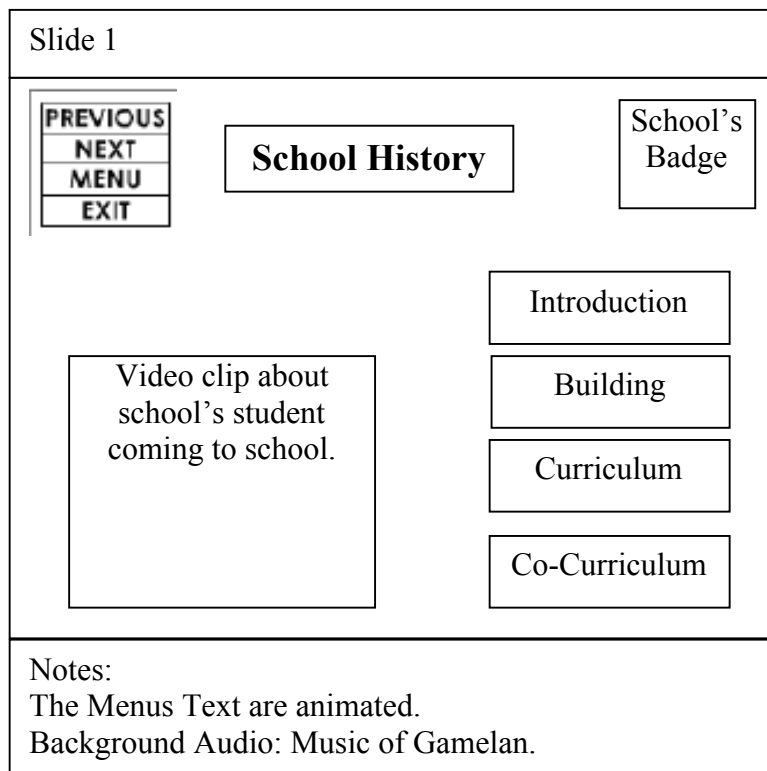
*1 mark for the role

*1 mark for the explanation

*1 mark for example

Question 32 (ii)

Any layout of story board which include all multimedia element and navigation / button are acceptable.



[4 marks]

*1 mark for 5 element of multimedia.

*1 mark for label or notes.

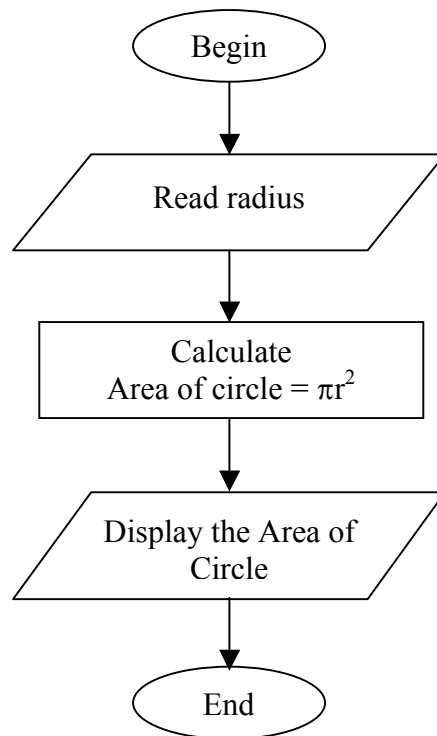
*1 mark for button or navigation.

*1 mark for slide number or title.

Question 33 (a)

Input: radius
Process: calculate the area of a circle
Output: area of circle

[3 marks]

Question 33 (b)

[4 marks]

- *1 mark for Begin and End
- *1 mark for Input (read, get or input)
- *1 mark for Process (calculate)
- *1 mark for Output (display, print or output)