

Section C**Bahagian C**

[14 marks]

[14 markah]

This section consist of **three** questions. Answer two questions only.

*Bahagian ini mengandungi **tiga** soalan. Jawab dua soalan sahaja.*

(i) **Question 31.**

Soalan 31.

(ii) **Question 32 or question 33.**

Soalan 32 atau soalan 33.

31. Figure 10 contains statements explaining the programming project for ICT students.

Rajah 10 mengandungi pernyataan yang menerangkan projek pengaturcaraan untuk pelajar ICT .

As an ICT student, you are required to develop a program to calculate the volume of cuboids using Visual Basic software. The program should allow the users to input the items needed to calculate the volume of cuboids and then display the output.

Sebagai pelajar ICT, anda dikehendaki membangunkan satu program untuk mengira isipadu kuboid menggunakan perisian Visual Basic. Program tersebut hendaklah membenarkan pengguna memasukkan item input yang diperlukan untuk mengira isipadu kuboid dan memaparkan output.

Figure 10

Rajah 10

Based on the above statements in Figure 10 :

Berdasarkan pernyataan di rajah 10 :

- a) Design an input interface for the program. Your design should include All the input items required to develop the program as in the statements.

Hasilkan rekabentuk antaramuka input bagi program tersebut. Rekabentuk anda hendaklah merangkumi item input yang diperlukan untuk membangunkan program seperti di dalam kenyataan di atas.

[4 marks]

[4 markah]

- b) Figure 11 shows a programming coding to calculate the Volume of a Cylinder using Visual Basic software.

Rajah 11 menunjukkan kod aturcara untuk mengira isipadu silinder menggunakan perisian Visual Basic.

```

Private Sub Command1_Click()
    Dim radius As Integer
    Dim height As Integer
    Const C As Double = 22 / 7
    radius = A
    A = Text1.Text
    height = B
    B = Text2.Text
    Volume = C * A * A * B
    Text3.Text = Volume
End Sub

```

Figure 11

Rajah 11

Based on Figure 11 :

Berdasarkan Rajah 11 :

- (i) Identify one

Kenalpasti satu

Variable :

Pembolehubah :

Constant. :

Pemalar :

[2 marks]

[2 markah]

- (ii) State the difference for the answer in (b i).

Nyatakan perbezaan bagi jawapan di (b i).

[1 marks]

[1 markah]

32. Figure 12 shows a network environment in SMK Sentosa Permai.

Rajah 12 menunjukkan satu persekitaran rangkaian di SMK Sentosa Permai.

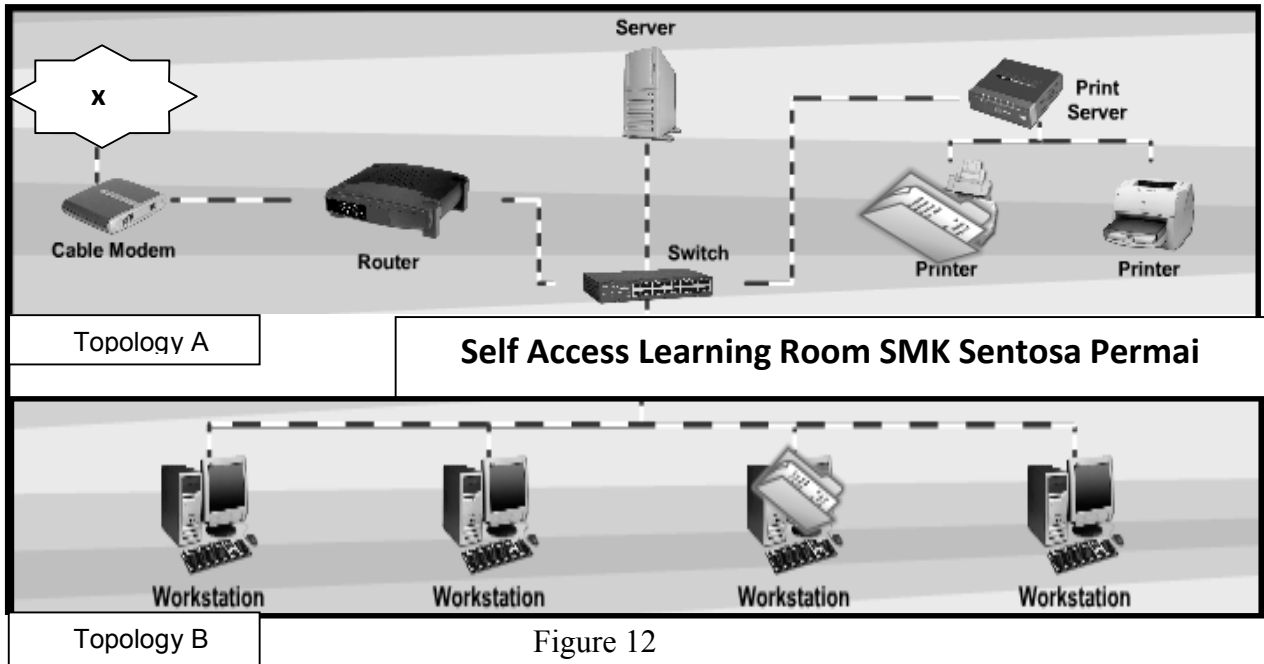


Figure 12

Rajah 12

Based on figure 12 :

Berdasarkan rajah 12 :

- a) i) State the type of computer network used in Figure 12

Nyatakan jenis rangkaian komputer yang digunakan dalam rajah 12.

[1 marks]

[1 markah]

- ii) Describe the type of network communication X in Figure 12.

Jelaskan jenis rangkaian komunikasi X dalam rajah 12.

[2 marks]

[2 markah]

- b) Explain two differences between Topology A and Topology B.

Terangkan dua perbezaan antara Topologi A dan Topologi B.

[4 marks]

[4markah]

33. Table 10 (a), 10 (b) and Figure 13 show the tables and their respective field in an information system.

Jadual 10 (a), 10 (b) dan Rajah 13 menunjukkan jadual dan medan dalam sistem maklumat.

Customer_Table

CustID	Customer Name	Address	Date of Birth
C0001	Aman Jauhari	21, Jalan Durian, Taman Kota Jaya	22-Jul-82
C0002	Aman Bukhari	10, Kampung Baru	12-Feb-86
C0003	Sylvester Lim	4A, Jalan Limau Manis, Kampung Limau	30-Sept-90

Table 10 (a)

Jadual 10 (a)

Order_Table

OrderID	CustID	Product	Quantity	Unit Price
OR1	C0002	Notepad	2	3.00
OR2	C0002	Drawing Pad	3	3.50
OR3	C0001	Stapler	4	9.00

Table 10 (b)

Jadual 10 (b)

Based on Table 10 (a) and Table 10 (b) :

Berdasarkan jadual 10 (a) dan jadual 10 (b) :

- a. i) State the suitable primary key for Customer_Table.

Nyatakan kunci primer yang sesuai untuk "Customer_Table"

[1 mark]

[1 markah]

- ii) Justify the answer in a (i).

Beri justifikasi bagi jawapan dalam a(i)

[2 marks]

[2 markah]

b. State the Data Type for the field :

Nyatakan jenis data untuk medan :

- i) Product
- ii) Date of Birth

[2 marks]

[2 markah]

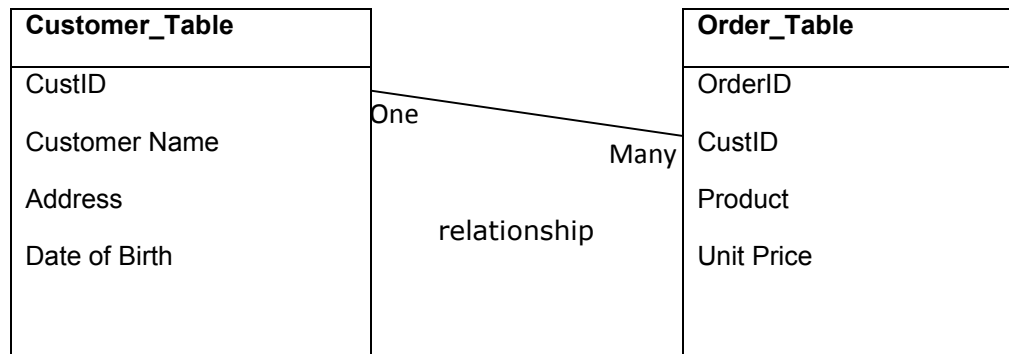


Figure 13

Rajah 13

Based on Figure 13 :

Berdasarkan jadual 13 :

c. Explain the difference between CustID in Customer_Table and CustID in Order_Table.

Jelaskan perbezaan di antara "CustID" dalam "Customer Table" dan "CustID" di dalam "Order_Table".

[2 marks]

[2 markah]